

# Industry Overview



## INDUSTRY

Almost 30% of the EU27+UK agricultural area is classified as marginal:

Land that has little agricultural value because the value of the products cultivated on the land is lower than the cost of producing it. Left neglected, these lands continue to degrade, in turn leading to more biodiversity loss and ecosystem damage, leaving the land and surrounding ecosystems more vulnerable to climate change impacts, including desertification.

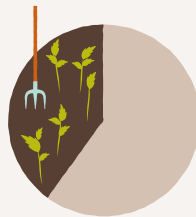
Across the continent, agricultural land and activities are threatened by poor soil health with 60-70% of all soils are unhealthy in Europe due to land management practices, pollution, intensive agriculture, urbanisation, and the effects of climate change.



## FACTS



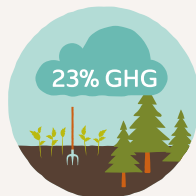
Biomass use for energy and materials in Europe could increase by 70-150% by 2050.



EU farms used 157 million hectares of land for agricultural production in 2020, 38 % of the total land area of the EU.



Soils host more than 25% of the world's biological diversity.



An estimated 23% of total anthropogenic greenhouse gas emissions (2007-2016) derive from Agriculture, Forestry and Other Land Use.

## RESOURCES

- [Yield performance of dedicated industrial crops on low-temperature characterized marginal agricultural land in Europe – a review, MAGIC project](#)
- [Mapping marginal lands in Europe, QUICKScan](#)
- [EU coal regions: opportunities and challenges ahead, EU Science Hub](#)
- [Marginal Lands to Grow Novel Bio-Based Crops: A Plant Breeding Perspective, Wageningen University & Research](#)
- [Paludiculture: Peat formation and renewable resources from rewetted peatlands, IMGC](#)
- [Carbon stocks and sequestration in terrestrial and marine ecosystems: a lever for nature restoration?, European Environmental Agency](#)
- [Towards Sustainable Land Use, OECD](#)

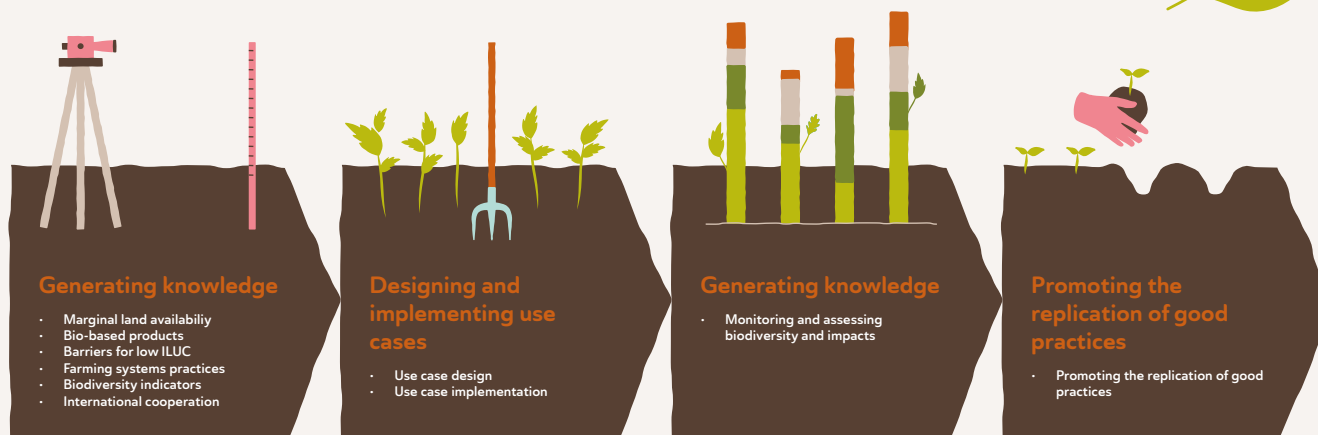
# Project Overview

MarginUp!

## ABOUT

MarginUp! is developing sustainable and circular value chains to produce bioproducts and biofuels from natural raw materials grown on marginal lands. By introducing climate resilient and biodiversity-friendly non-food crops on marginal and low-productivity lands, MarginUp! will increase farming system resilience, enhance biodiversity, and promote stakeholder participation.

[margin-up.eu](http://margin-up.eu)



## PARTNERS



## KEYWORDS

- Marginal Lands
- Feedstock
- Biobased products
- Biodiversity
- Biofuels
- Raw Materials
- Low-productivity Lands
- Farming
- Circular Value Chains
- Circular Economy

## BUDGET

Budget: € 7 829 617,50

Duration: 48 months

Partners: 29 from 9 countries



Funded by the European Union. Views and opinions expressed are however those of the author(s) only and do not necessarily reflect those of the European Union or REA. Neither the European Union nor REA can be held responsible for them.

For more details about Partners and Budget, visit [CORDIS](https://cordis.europa.eu).